

Services SRIA provides

Publications: Written by experts in design, specification and construction SRIA publications are developed specifically for use by practicing engineers, architects, builders and government. Most are provided free of charge and can be downloaded from the website.

Technical support: A comprehensive technical advice service is available to the construction industry on the design and use of reinforcing steel in concrete. Activities are coordinated from the National Office in Sydney where professional staff respond to technical enquiries. Further specialised support is accessible through a broad network of experts.

Office seminars: SRIA staff regularly visit consulting engineers, specifiers and builders to discuss industry issues, projects and to further develop knowledge on the use of steel reinforcement and construction methods. Free in-house lectures are available on request.

Special research: Recent SRIA research projects include reinforcement bond tests and an extensive testing program for Class L mesh slabs. This important research is bringing the latest information and design requirements to practitioners.

Industry leadership: SRIA staff present technical papers at major national and international conferences on the latest advances in the use of steel-reinforced concrete. Copies of SRIA papers are available free of charge from the website.

Professional development: As part of its commitment to the future of Australia's building industry, the SRIA lectures at universities providing up-to-date design and specification materials free of charge to over 2,500 students every year.

Awarding excellence: The SRIA presents annual Undergraduate Awards for Excellence in Reinforced Concrete Design. This is a cash prize for the student who gains the highest mark in the subject in which the SRIA lecture is delivered.

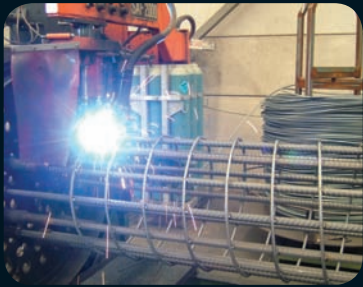
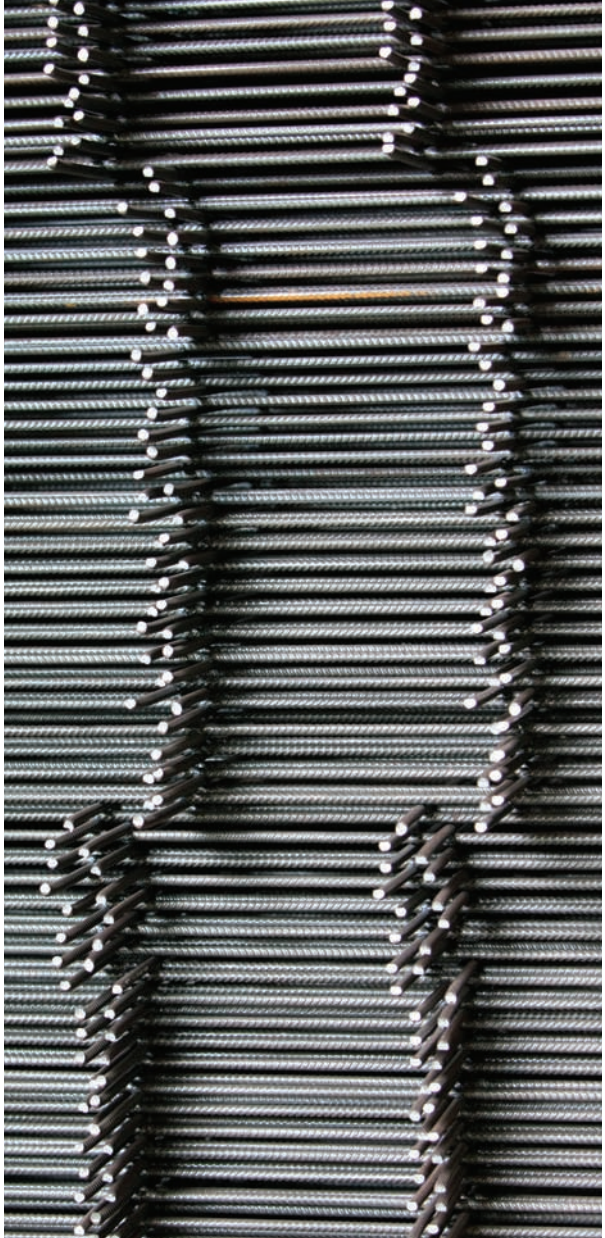
Industry linkage: The SRIA works collaboratively with like associations to develop areas supporting design, education and market development.

Australian Standards: The SRIA is committed to modern easy-to-use design standards for steel-reinforced concrete construction in Australia. The SRIA contributes to all related Australian Standards committees. SRIA staff will assist with queries regarding the interpretation of these standards.

Standards

SRIA Processors benchmark both locally and internationally to sustain world's best practice across design, specification, production and supply. The SRIA strives to achieve quality and continuous improvement through its active involvement in Standards Australia, with representation on the following committees:

- BD-002 Concrete structures (AS 3600)
- WD-003 Welding of structures (AS 1554)
- BD-006 Structural design actions (AS 1170)
- BD-025 Residential slabs and footings (AS 2870)
- BD-066 Tilt-up concrete construction (AS 3850)
- BD-084 Steel reinforcing materials (AS/NZS 4671)
- BD-090 Bridge design (AS 5100)
- BD-098 Guide to residential pavements (AS 3727)



SRIA National Office

Grd Flr, 71 Ridge St
Gordon NSW 2072

PO Box 418
Roseville NSW 2069

Freecall 1300 300 114

Office 02 9499 2152

Fax 02 9499 9471

Email info@sria.com.au

Internet www.sria.com.au

Australia's leading non-profit institute for reinforcement steel

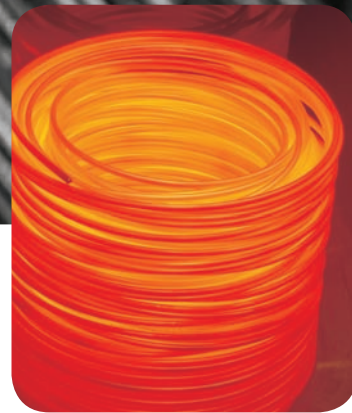


Providing the hub for knowledge, industry linkage and support



SRIA's Core Objectives

- Member Services
- Marketing & Promotion
- Market Defence & Development
- Education
- Codes, Standards & Regulations



SRIA Processor Members

Steel reinforcement in Australia is distributed by an efficient network of specialist reinforcement processors. SRIA Processor Members are established Australian companies responsible for subsequent processing of reinforcing steel supplied by a steel producer in Australia or from overseas which significantly changes the shape and properties of the steel. They are processors of steel reinforcement in Australia,

meet recognised technical and quality standards and keep production and financial records. Processors act as the main link between major steel manufacturers and the end user of reinforcing materials. They provide the market with a one-stop processing shop for fabrication of steel reinforcement to AS 3600, AS 5100 and AS 2870 in compliance with the relevant Australian Standard AS/NZS 4671 Steel reinforcing materials. Steel reinforcement is often packaged with a range of complementary products supplied by SRIA Associate Members.

Processor services include:

- reinforcing material scheduling from engineering and architectural drawings;
- processing by cutting and bending to the shape required;
- welding pre-fabrication of major components;
- coordinating and delivering to site as the construction program requires;
- providing associated items to assist with the installation on site;
- on-site after sales support as required;
- quality certification for compliance.

For contact details and the capability of the leaders in Steel Processing visit www.sria.com.au

SRIA Associate Members

SRIA Associate Members (Accessories Suppliers, Machinery Suppliers & Steel Mills) are established Australian and International companies who have aims and objectives similar to those of SRIA. They strive for quality and compliance with the relevant standards, maintain quality assurance and implement workplace health and safety.

Associate Members service Processor Members through supply of:

- ancillary products providing the end user with a complete solution;
- steel reinforcing feed materials;
- processing equipment.

SRIA Processor Members commonly package in-house a range of Associate Member complementary products for delivery of a complete steel reinforcing solution.

For contact details and the capability of the leaders in Accessories Supply visit www.sria.com.au



SRIA members service Australian industry with

- a nation-wide processor footprint and distribution network
- reinforcing products manufactured to the highest standards
- a reliable and efficient just-in-time supply chain
- efficient control and management of risk
- complete packaged solutions
- very short lead times measured in hours to days
- confidence, reliability & responsibility

Please visit our website at www.sria.com.au

Benefits of steel reinforced concrete

- simplicity of design & installation
- speed of construction
- substantial economy
- excellent inbuilt fire resistance
- built to last with minimum maintenance
- flexibility in design and construction
- broad national network of subcontractors
- low risk proven solution

About Steel Reinforcement Institute of Australia

The Steel Reinforcement Institute of Australia (SRIA) is the leading non-profit national organisation providing high quality technical support and information service to the Australian building industry on the use of reinforcing steel in concrete, primarily reinforcing bar and reinforcing mesh. The organisation actively supports and encourages the use of Australian capability and quality in the processing and use of reinforcing steel in concrete in an increasingly competitive global market. The SRIA evolved from the Steel Reinforcement Promotion Group and was founded in 1988 reflecting the growing demand for technical assistance. SRIA is primarily funded by the vast majority of the processors of steel reinforcement used in Australian construction and supported by the founding Australian mill (supplier) members and associate members. The SRIA Board sets the charter, strategy and governance through the representation and leadership of all processor and founding supplier member companies. The Board's core objectives are developed and delivered through special committees and expert panels. The SRIA offers practical solutions to meet the diverse and ever changing needs of the Australian building industry.

SRIA Aims

- Encourage and develop excellence in the manufacture and supply of quality steel reinforcement for the efficient design and construction of reinforced concrete structures by highlighting and promoting innovations.
- Remain the contact point for specialist reinforcement knowledge, technical enquiries, addressing the needs of the construction industry and provide a hub of sound technical data.
- Educate industry and disseminate steel reinforcement knowledge via regular publications, lectures, seminars, research programs and tours.



Reinforcing products include:

- Reinforcing bar
- Reinforcing mesh
- Prefabricated units
- Galvanized solutions
- Mechanical couplers
- Placement items such as dowels, bar chairs, tie wire etc

Other building and concrete accessories range from:

- Construction joints
- Waterproof membrane
- Safety protection
- Permanent formwork



Quality Assurance and Traceability

It is expected that SRIA members comply with the relevant Standards that apply to the reinforcement industry. This may be demonstrated through:

a) Third-Party Product Quality Certification to AS/NZS 4671 and all associated standards

- ACRS certification will satisfy this criterion but this is not exclusive.

b) Documented Quality Management System plus Authority Product Approvals

- International Organisation for Standardisation, ISO 9000 family of standards for quality management systems plus multiple product approvals from State and/or Federal Government Construction Authorities.

Mill Feed Materials

SRIA processors purchase their feed materials from quality Australian and overseas mills. A list of third party accredited mills can be found at www.acrs.net.au

Capability and Footprint

SRIA Processor Members supply steel reinforcement into resource, engineering construction, commercial and residential projects. This comprises both cut and bent reinforcing bar or manufactured reinforcing mesh. SRIA Member companies source, schedule, process and distribute packaged solutions to meet the clients' procurement strategies and project plans.

The SRIA Processor footprint spreads across all states of Australia and the distribution network provides a reliable and efficient just-in-time supply chain. Steel reinforcement traditionally has very short lead times measured in hours to days. Members understand the customer needs and the importance of service and delivery performance on the project construction plan. SRIA Members efficiently control and manage risk in reinforcement supply. Engaging the professional members of the reinforcement supply chain will turn potential risk into opportunity. With early SRIA Processor Member involvement on projects, customers can confidently build in these shorter lead times after the issuing of final construction documentation.

Sustainability

The SRIA promotes a program of steel stewardship, seeking to engage the whole steel reinforcement supply chain in adopting improved environmentally sustainable practices. SRIA Members led by a sustainability committee support environmental sustainability to measure and benchmark the industry's environmental, social and economic performance. This is a continual process of benchmarking, monitoring and measuring progress. The SRIA has established and maintains global networks to deliver improvement programs in responsible best practice to the local steel reinforcement sector.

The SRIA supports the Building Products Innovation Council (BPIC) in its three major areas of building code reform, product certification, and sustainability. Steel reinforcement Life Cycle Inventory (LCI) data has been developed and submitted to a national materials data base that will create a 'level playing field' for all construction materials. This is part of a Life Cycle Inventory for construction materials. It will be used in Life Cycle Assessment, Ecolabelling and ultimately in Sustainability Rating Tools for more energy efficient and sustainable building construction.

Workplace Health and Safety

SRIA's National Safety Group promotes industry wellbeing and a safe and healthy working environment. The SRIA records trend data and monitors national industry statistics on lost-time injuries (LTI's) and medical treatment injuries (MTI's), from participating Processor Members. This data enables each company to compare and benchmark their safety record against the National industry values for continuous improvement of their Safety Policy or Safety Management System. Historical data reveals impressive achievement by the steel reinforcement industry considering that the order of 0.5 million man hours per month is accrued. Consistent improvement and performance is a reflection of the safety conscious companies the SRIA represents. The ultimate aim is to achieve an accident-free workplace with zero harm to all steel reinforcement industry employees and contractors.

