

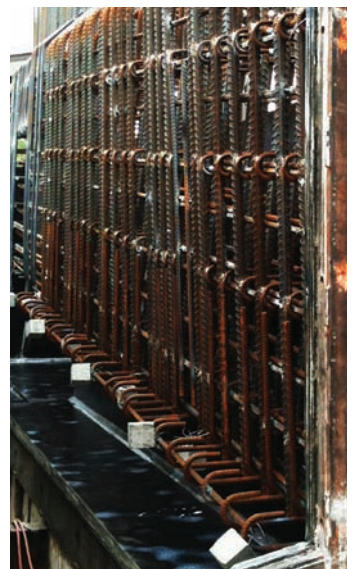
NEW AUSTRALIAN STANDARD FOR BAR CHAIRS

The Steel Reinforcement Institute of Australia (SRIA) submitted a proposal for a new Standard for Bar Chairs into the Standards Development Prioritisation Process in 2013. The Standards Development Committee has now assessed all projects and this important Bar Chairs Standard was approved on 17 May 2013.

This will be delivered under a Standards Australia resourced pathway. A Project Manager was appointed in August and the initiation phase has now begun. SRIA has received a wealth of stakeholder support. A kick off meeting is being targeted for late October 2013 and details will be circulated to the registered stakeholders.

Previous work in this area has provided a significant draft document. The scope includes minimum requirements for load capacity testing of bar chairs. This will ensure that cover to reinforcement in reinforced concrete structural elements is maintained within acceptable tolerances under the application of prescribed construction loads.

Product and performance requirements for bar chairs are expected to include their strength, permanent deflection, accuracy of manufacturing within acceptable tolerances (dimensional stability), identification/batch/supplier traceability and fixing.



This new Standard will cover all generic forms of bar chairs in the Australian market including:

- Wire
- Plastic
- Concrete block

Construction industry feedback on fundamental performance issues in real project applications is testimony to the need to establish an Australian Standard. The lack of generic guidance material poses significant and unnecessary risk to building design life that is assumed and expected in structural engineering specifications to the Building Code of Australia referenced Standards.

If you have specialised training in this field, bar chair related manufacture, design or practical construction expertise and feel you are able to contribute significantly to the development of this new Bar Chairs Standard then please do not hesitate to contact SRIA before this kick off meeting commences. SRIA contact details are listed overleaf.



SERVICES SRIA PROVIDES

Publications: Written by experts in design, specification and construction SRIA publications are designed specifically for use by practicing engineers, architects, builders and government. Most are provided free of charge and can be downloaded from the website.

Technical support: A comprehensive technical advice service is available to the construction industry on the design and use of reinforcing steel in concrete. Activities are coordinated from the National Office in Sydney where professional staff respond to technical enquiries. Further specialised support is accessible through a broad network of experts.

Office seminars: SRIA staff regularly visit consulting engineers, specifiers and builders to discuss industry issues, projects and to further develop knowledge on the use of steel reinforcement and construction methods. Free in-house lectures are available on request.

Special research: Recent SRIA research projects include reinforcement bond tests and an extensive testing program for Class L mesh slabs. This important research is bringing the latest information and design requirements to practitioners.

Industry leadership: SRIA staff present technical papers at major national and international conferences on the latest advances in the use of steel-reinforced concrete. Copies of SRIA papers are available free of charge from the website.

Professional development: As part of its commitment to the future of Australia's building industry, the SRIA lectures at universities providing up-to-date design and specification materials free of charge to over 3,000 students every year.

Awarding excellence: The SRIA presents annual Undergraduate Award for Excellence in Reinforced Concrete Design. This is a cash prize for the student who gains the highest mark in the subject in which the SRIA lecture is delivered.

Industry linkage: The SRIA works collaboratively with like associations to develop areas supporting design, education and market development.

Australian Standards: The SRIA is committed to modern easy-to-use design standards for steel-reinforced concrete construction in Australia. The SRIA contributes to all related Australian Standards committees. SRIA staff will assist with queries regarding the interpretation of these standards.

For further information the SRIA can be contacted through its national office:

Executive Director: Scott Munter

t	02 9499 2152	Grd Flr, 71 Ridge St
f	02 9499 9471	Gordon NSW 2072
m	0400 929 747	PO Box 418
e	info@sria.com.au	Roseville NSW 2069

SRIA REGISTRATION FORM

To keep informed of the most recent industry developments, releases and presentations on steel reinforcement and to maintain your professional development register now for the new SRIA website database. Your details will remain highly confidential and we will ensure your reinforcement knowledge remains up-to-date.

You may register online at
www.sria.com.au/registration.html

or fill out your details below :

Title:	<input type="checkbox"/> Mr	<input type="checkbox"/> Mrs	<input type="checkbox"/> Ms	<input type="checkbox"/> Dr
First name:	_____			
Last name:	_____			
Position:	_____			
Company:	_____			
Postal address:	_____			

Phone number (work):	_____			
Mobile Phone number :	_____			
Email:	_____			

and email, fax or post your details to SRIA National Office:

Post:	PO Box 418 Roseville NSW 2069
Fax:	02 9499 9471
Email:	info@sria.com.au

Privacy statement:

SRIA will only collect information that is necessary for communication. By submitting your contact details you agree that the measures that SRIA take with respect to privacy and the disclosure of information as expressed in the privacy statement on the SRIA website are reasonable and that you consent to the scope of the disclosure being proposed.