



STEEL
REINFORCEMENT
INSTITUTE
OF AUSTRALIA



Member-driven solutions to today's reinforced concrete needs

The Steel Reinforcement Institute of Australia (SRIA) is a national non-profit organisation providing a high quality technical support and information service to the Australian building industry. SRIA is funded and supported by the manufacturers and processor suppliers of steel reinforcing and associated hardware products used in Australian construction.

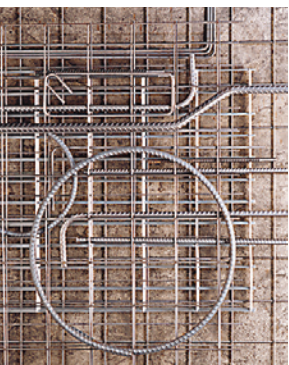
Our corporate vision is to develop a respected and influential organisation to ensure that reinforced concrete remains the preeminent building material in Australia.

Membership

The membership of the SRIA consists of Members and Associate Members.

Members are required to be accredited either through membership of the Australian Certification Authority for Reinforcing Steels (ACRS), or equivalent.

The membership is composed of steel processors and Australian steel producers. The members source material from both within Australia and globally.

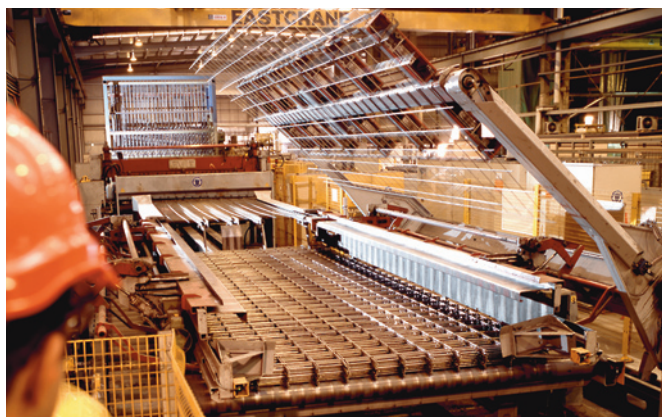


The steel processors are responsible for the subsequent processing of reinforcing steel, locally-produced or imported, which is supplied by a steel producer. They may be importers of both bar and coil, use Australian produced materials, or a combination of both.

The processor members are *Active Steel*, *AKZ Engineering*, *Best Bar*, *Bianco Reinforcing*, *NatSteel Australia*, *Neumann Steel*, *OneSteel Reinforcing*, and *Smorgon Steel Reinforcing*.

Processors are able to change the shape of bar supplied by the mills, to the specifications of the design engineer. They are also able to bend mesh when required, and they may also cold process the coil supplied by the mills.

The processing may include cold-rolling, cold-drawing, decoiling and straightening, or automatic, electrical-resistance welding to form mesh.



The Australian steel producers are *OneSteel Market Mills* and *Smorgon Steel Manufacturing*.



As producers they are responsible for producing reinforcing steel in bar (straight length) or coil form from a hot rolling process.

They produce bar in nominal diameters ranging from 10 mm to 40 mm diameter, and up to 50 mm on request. The coil is typically produced in 12 mm and 16 mm diameters.

All steel reinforcement materials must be supplied to meet the minimum requirements specified in AS/NZS 4671:2001.



Associate Members consist of companies that manufacture and/or distribute and market products used with steel reinforced concrete construction.

Our current Associate Members are *Action Products*, *Ancon* (a Division of Tyco Building Products), *Danley Construction Products Pty Ltd*, *Erico Products Australia*, *Modfix* (a Division of ITW Construction Products) and *Reid Construction Systems Pty Ltd*.

These companies bring a wealth of specialist knowledge to the support we offer to design engineers, builders and contractors. Their extensive range of products and services cover expert knowledge in the use of:

- Couplers (threaded, bolted, taper-threaded, anchors that replace the need for cogged or hooked bars);
- Bar chairs;
- Products (and the methods) to maintain continuity of reinforcement at construction joints in concrete;
- Shear connectors, (for slabs, punching shear etc.);
- Formwork tie systems and splice units.

Some design software packages as well as downloadable instruction sheets on use of some of the products, are offered on their respective web sites.

Full contact details for all SRIA Members and Associate Members are listed on the SRIA web site, www.sria.com.au, with direct links to their web sites.

The SRIA web site enables the user to quickly access data on products produced and supplied by our Members and Associate Members.